

Remington 597 Trigger System

Operators Instruction Manual



2737 Nettle Ave. - Sheldon, IA 51201

Phone: 712-324-7409

Email: jardinc@excite.com - www.jardinc.com



WARNING

This fire control system is intended for use only by experienced competitive shooters and professionals. You must take responsibility for your own actions. We will not be responsible for any loss, injury, or death resulting from the use or misuse of this product.

The handling and use of firearm bears with a certain unavoidable risks, like sky diving and rock climbing. If you are not willing to accept responsibility for your own actions, guns are not for you.

The use of any custom parts or modifications may void any warranty from the manufacturer of your firearm.

Returns will not be accepted on any parts that have been modified.

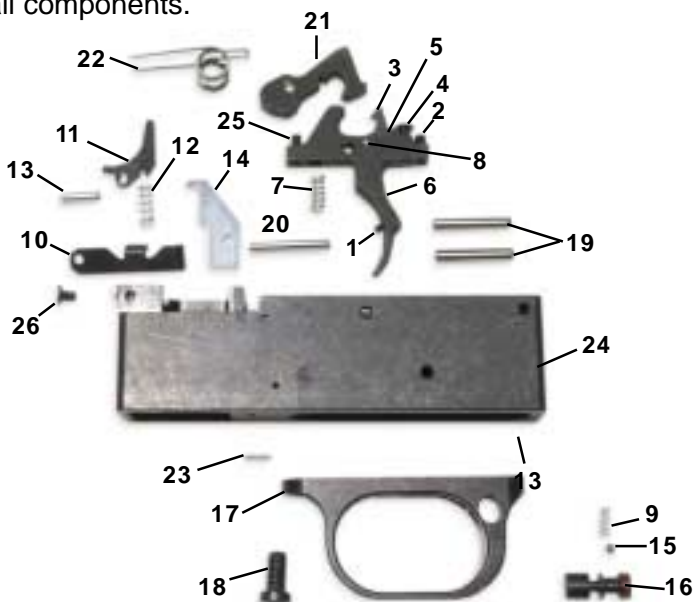
If you do not have a thorough understanding of your guns trigger system and the purpose and function of all the parts, do not attempt to install this system. Have it installed by an experienced gunsmith.

Read the instructions completely before beginning the procedure.

Your 597 trigger assembly comes adjusted from the factory and should be a replacement only procedure, however should you decide to modify the factory setting, below are some suggestions.

1. Remove the magazine and visually check the chamber before further handling of the rifle, to verify it is not loaded.
2. Disassemble the stock from the receiver and remove trigger assembly from receiver.
3. The front screw in the trigger is the over travel screw. The hammer will need to be removed to access this screw. There should be minimal over travel when properly adjusted.
4. Adjust the sear engagement screw (the rear screw on the trigger) by turning screw clockwise (with the hammer cocked). From the point where the sear releases the hammer, then turn the screw counterclockwise until there is sufficient sear engagement to function safely and properly. (whenever this screw is adjusted the disconnect and safety screws must be readjusted).

5. Adjust the disconnect screw so when the hammer is in the cocked position you can push down on the hammer and feel it brush against the hook of the disconnect as much as possible without hooking.
6. To set the safety screw, place the hammer in the cocked position. Place safety in the safe position. Turn the screw in the trigger shoe in until it contacts the safety button.
7. Perform all safety and function checks.
8. Reinstall all components.



Remington 597 Trigger Parts Breakdown List

Ref #	Part #	Description	Ref #	Part #	Description
1.	1390	Safety Screw	13.	1505	Magazine Latch Pin
2.	1155	Sear Screw	14.	1502	Ejector
3.	1167	Disconnect	15.	1163	Detent Ball
4.	1187	Disconnect Screw	16.	1162	Safety Button
5.	1017	Disconnect Spring	17.	1161	Trigger Guard
6.	1165	Trigger	18.	1159	Guard Screw
7.	1011	Trigger Return Spring (1#)	19.	1053	Trigger/Hammer Pin
-	1013	Trigger Return Spring (1-1/2#)	20.	1504	Ejector Pin
-	1014	Trigger Return Spring (2#)	21.	1169	Hammer
-	1016	Trigger Return Spring (2-1/2#)	22.	1170	Hammer Spring
-	1017	Trigger Return Spring (3#)	23.	1164	Roll Pin
8.	1166	Disconnect Pin	24.	1506	Housing
9.	1058	Safety Detent Spring	25.	1123	Overtravel Screw
10.	1500	Bolt Stop	26.	1499	Bolt Stop Pin
11.	1501	Magazine Latch	-	1020	Thread Lock
12.	1113	Magazine Latch Spring			

Order by Part # and Description

JARD, Inc.

2737 Nettle Ave. - Sheldon, IA 51201

Phone: 712-324-7409

Email: jardinc@excite.com - www.jardinc.com