

Remington 700 Match Trigger

Operators Instruction Manual



2737 Nettle Ave. - Sheldon, IA 51201

Phone: 712-324-7409

Email: jardinc@excite.com - www.jardinc.com



This fire control system is intended for use only by experienced competitive shooters and professionals. You must take responsibility for your own actions. We will not be responsible for any loss, injury, or death resulting from the use or misuse of this product.

The handling and use of firearm bears with a certain unavoidable risks, like sky diving and rock climbing. If you are not willing to accept responsibility for your own actions, guns are not for you.

The use of any custom parts or modifications may void any warranty from the manufacturer of your firearm.

Returns will not be accepted on any parts that have been modified.

If you do not have a thorough understanding of the Remington 700 trigger system and the purpose and function of all the parts, do not attempt to install this system. Have it installed by an experienced gunsmith.

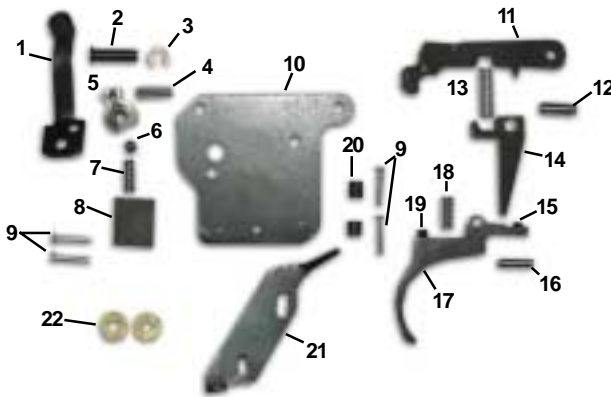
Read the instructions completely before beginning the procedure.

1. Check to make sure gun is unloaded.
2. Remove the bolt from the receiver and the receiver from the stock.
3. Using a punch, remove the Factory trigger housing from the receiver. (Bolt stop lever and spring will be removed when performing this step.)
4. Note: the factory installed the pull rate spring requested; others are available.
5. Install the Jard trigger into the receiver, reinstalling the bolt stop lever at this time if on a Remington action.

Tips:

- A) Place the tapered end into the hole first.
 - B) Place the short pin in the front hole, the long pin in the rear hole. (The bolt stop lever pivots on the rear pin, so the lever and its return spring must be installed when inserting the rear pin.)
 - C) Typically it is easier to install if the front pin is installed first and the trigger housing is held at an angle to the receiver to alleviate the sear return spring from misaligning the sear pivot hole during installation.
6. Make sure the trigger and sear pivot easily and do not bind.
 7. Place the bolt back into the receiver and make sure the bolt is cocked. If the bolt is not cocked, back out the sear engagement and over-travel screws until the bolt will remain cocked.

8. The over-travel screw can now be adjusted. With the action cocked, turn this screw into the point where pulling the trigger will not release the sear; then while pulling back on the trigger, turn the screw counter clockwise slowly until the sear is released. It should then be turned slightly further so there is ample clearance between the sear and trigger when the trigger is pulled. If there is no clearance the sear may not always be released cleanly when pulling the trigger.
9. The sear engagement screw may now be adjusted with the bolt cocked. Turn the screw clockwise until the sear is released. Now turn the screw back counter clockwise until a safe amount of sear engagement is achieved.
10. Check the functioning of the trigger by slamming the bolt home (closing it sharply) several times. If the sear is released during this, then sear engagement must be increased and/or the weight of pull increased.
11. Install the receiver back into the stock and check the function of the safety and bolt release if installed. Also again perform safety checks.
12. Allow loctite to dry 24 hours before using the weapon.



Remington Match Trigger Parts Breakdown List

Ref #	Part #	Description	Ref #	Part #	Description
1.	1229	Safety Lever	15.	1160	Sear adjustment screw
2.	1452	Safety pin	16.	1166	Trigger Pin
3.	1254	C-clip	17.	1272	Trigger
4.	1237	Roll pin	18.	1058	Trigger Return Spring (2 oz)
5.	1232	Safety Cam	-	1059	Trigger Return Spring (3 oz)
6.	1163	Safety Detent Ball	-	1060	Trigger Return Spring (4 oz)
7.	1060	Safety Detent Spring	-	1061	Trigger Return Spring (5 oz)
8.	1269	Rear Block	-	1062	Trigger Return Spring (7 oz)
9.	1239	Rivet Pins	19.	1287	Over-travel screw
10.	1268	Housing side plate	20.	1270	Spacer bushings
11.	1271	Sear	21.	1273	Bolt release
12.	1238	Lever Pin	22.	1242	Shim Washers
13.	1513	Sear return spring	-	1020	Thread Lock
14.	1274	Center lever			

Order by Part # and Description

JARD, Inc.

2737 Nettle Ave. - Sheldon, IA 51201

Phone: 712-324-7409

Email: jardinc@excite.com - www.jardinc.com