

Sako or Tikka Trigger System

Operators Instruction Manual



2737 Nettle Ave. - Sheldon, IA 51201

Phone: 712-324-7409

Email: jardinc@excite.com - www.jardinc.com



WARNING

This fire control system is intended for use only by experienced competitive shooters and professionals. You must take responsibility for your own actions. We will not be responsible for any loss, injury, or death resulting from the use or misuse of this product.

The handling and use of firearm bears with a certain unavoidable risks, like sky diving and rock climbing. If you are not willing to accept responsibility for your own actions, guns are not for you.

The use of any custom parts or modifications may void any warranty from the manufacturer of your firearm.

Returns will not be accepted on any parts that have been modified.

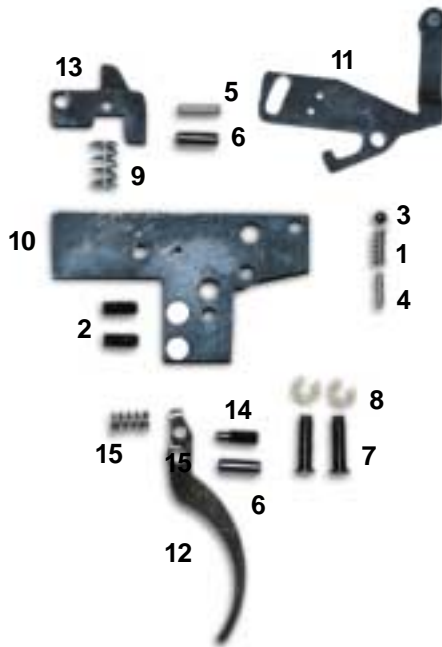
If you do not have a thorough understanding of the firearms trigger system and the purpose and function of all the parts, do not attempt to install this system. Have it installed by an experienced gunsmith.

Read the instructions completely before beginning the procedure.

Your JARD trigger system comes adjusted from the factory and should be a replacement only procedure, however should you decide to modify the factory setting, below are some suggestions. (note: because of the many variations of mousers, to achieve proper fit, the stock may require inletting, or the safety lever (on those models) may need to be bent.)

1. Verify the gun is unloaded, and remove the stock from the receiver.
2. To adjust the overtravel screw (top screw), with the action cocked, turn this screw in until it contacts the trigger, so pulling on the trigger will not release the sear; then while pulling back on the trigger, turn the screw counterclockwise slowly until the sear is released; it should then be turned farther, ever so slightly, so there is ample clearance between the sear and trigger when the trigger is pulled. If there is no clearance, the sear may not always be released clearly when pulling the trigger.
3. The sear engagement screw (bottom screw) may now be adjusted. Turn the screw counterclockwise several turns and close the bolt leaving the action cocked, then slowly turn this screw in until the sear is released. Now the screw must be backed off (counterclockwise) until safe sear engagement can be achieved.

4. Check the functioning of the trigger by slamming the bolt home (closing it sharply) several times. If the sear is not released when closing sharply, then it may be possible to adjust for less sear engagement, but if the sear is released it must be back off further, and/or the weight of pull increased.
5. Adjust the offset safety screw so there is NO trigger movement when the safety is on and the bolt is cocked. (Note: There must be sufficient sear engagement to allow reliable safety function.)
6. Install the receiver back into the stock and perform function and safety checks.



Trigger Parts Breakdown List

Ref #	Part #	Description	Ref #	Part #	Description
1.	1060	Ball Spring	13.	1515	Sear
2.	1155	Screw, #6-40 x 5/16"	14.	1444	Safety Screw
3.	1163	Ball, 1/8" Dia.	15.	1011	12 oz. Trigger Spring
4.	1164	Roll Pin, 1/16" x 5/16"	-	1012	14 oz. Trigger Spring
5.	1237	Roll Pin, 3/32" x 3/8"	-	1013	19 oz. Trigger Spring
6.	1238	Dowel Pin, 1/8" x 3/8"	-	1014	22 oz. Trigger Spring
7.	1452	Pivot Pin	-	1015	26 oz. Trigger Spring
8.	1254	E-Clip	-	1016	28 oz. Trigger Spring
9.	1367	Return Spring, Sear	-	1017	36 oz. Trigger Spring
10.	1561	Trigger Housing	-	1020	Thread Lock
11.	1560	Safety Assembly			
12.	1447	Trigger			

Order by Part # and Description

JARD, Inc.

2737 Nettle Ave. - Sheldon, IA 51201

Phone: 712-324-7409

Email: jardinc@excite.com - www.jardinc.com